

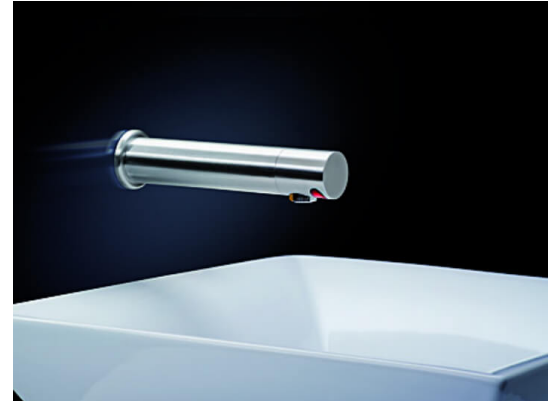


SENSOR TAP WALL MOUNTED 250MM DC

Order Code 42235

Zip AquaSense™ Touch-free tap range incorporates simple and modern design, with the latest electronic functionality delivering maximum hygiene and efficiency with integrated flow control achieving a 6 Star WELS rating for maximum water savings, the tap also features an automatic purge function, sensor range adjustment, wave on/wave off function, Anti-Vandal and Lock Out functions and a Chlorination function.

Manufacturing Code 42235

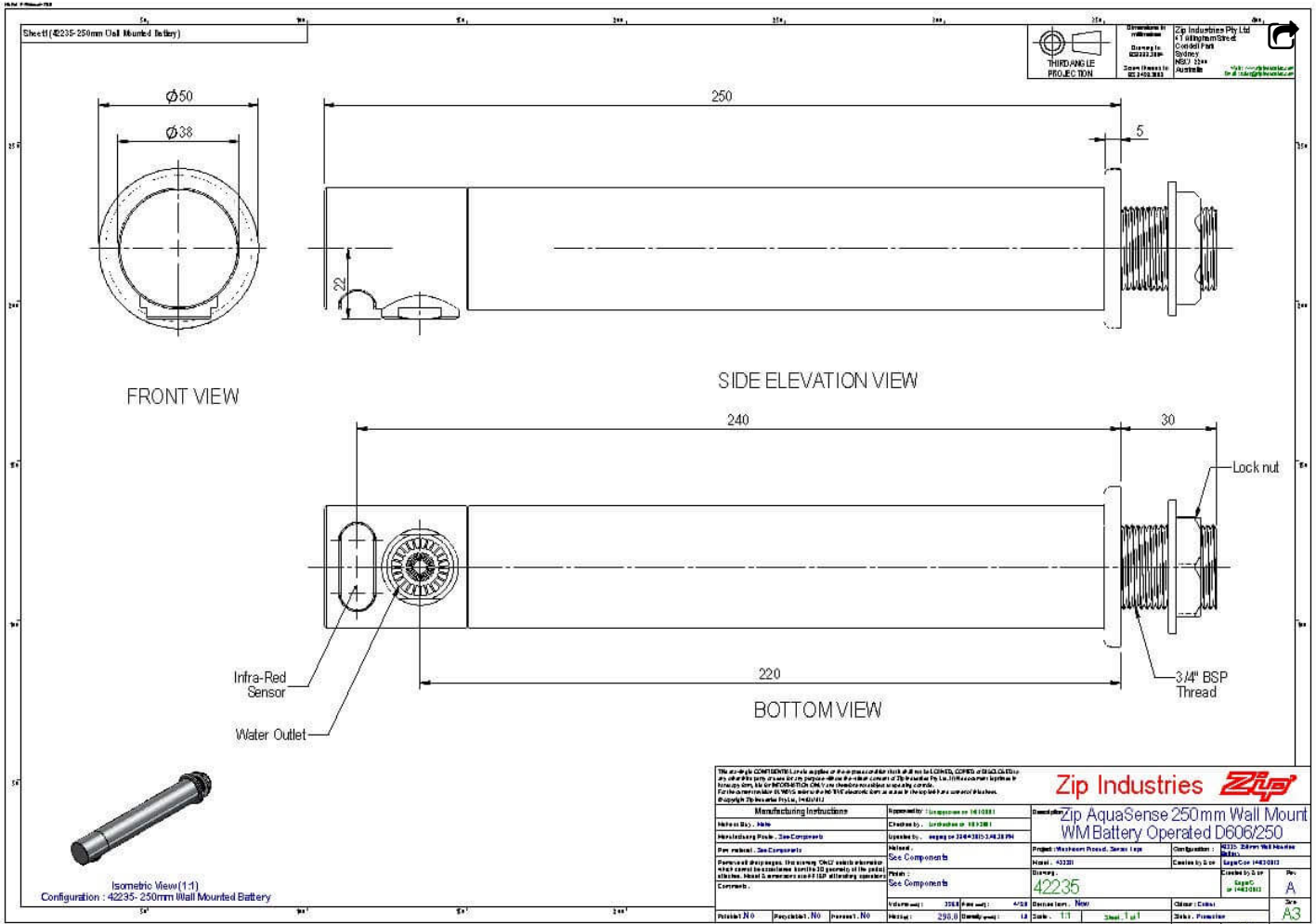


Water Pressure	Min 70kPa - Max 700kPa
Water Connection	12.7mm BSP
Power Rating	6V transformer power pack 10amp GPO, 220V - 240V AC
Product Approvals	Watermark, CE
Wels Rating	6 Star
Warranty	1 Year

Installation Requirements

Must be installed by a suitably qualified person in accordance with manufacturers instructions and with all relevant plumbing and electrical regulations

Installation Detail



<p>The drawings are the property of Zip Industries Pty Ltd and shall not be used for any other purpose without the prior written consent of Zip Industries Pty Ltd. All rights reserved. For the purposes of this drawing, the dimensions are in millimeters unless otherwise stated. All dimensions are to the center of the hole unless otherwise stated. All dimensions are to the center of the hole unless otherwise stated. All dimensions are to the center of the hole unless otherwise stated.</p>		<p>Zip Industries <i>Zip</i></p> <p>Zip AquaSense 250mm Wall Mount WM Battery Operated D606/250</p>	
<p>Manufacturing Instructions</p> <p>Material: See Components</p> <p>Finishes: See Components</p> <p>Assembly: See Components</p> <p>Notes: See Components</p> <p>Comments:</p>	<p>Issue No: 1010001</p> <p>Created by: 1010001</p> <p>Issued by: 1010001</p> <p>Project: Washroom Floor, Series 1 up</p> <p>Issue No: 42235</p> <p>Issue Date: 4/22/2018</p> <p>Issue By: 42235</p> <p>Issue Date: 4/22/2018</p>	<p>Quantity: 42235</p> <p>Order No: 42235</p> <p>Order Date: 4/22/2018</p> <p>Order By: 42235</p> <p>Order Date: 4/22/2018</p>	<p>Revision: A</p> <p>Revision Description: 42235</p> <p>Revision Date: 4/22/2018</p> <p>Revision By: 42235</p> <p>Revision Date: 4/22/2018</p>
<p>Part No: 42235</p> <p>Part Name: 250mm Wall Mounted Battery</p> <p>Part Desc: 250mm Wall Mounted Battery</p> <p>Part Unit: 1</p> <p>Part Qty: 1</p> <p>Part Price: 1.1</p> <p>Part Cost: 1.1</p>	<p>Part No: 42235</p> <p>Part Name: 250mm Wall Mounted Battery</p> <p>Part Desc: 250mm Wall Mounted Battery</p> <p>Part Unit: 1</p> <p>Part Qty: 1</p> <p>Part Price: 1.1</p> <p>Part Cost: 1.1</p>	<p>Part No: 42235</p> <p>Part Name: 250mm Wall Mounted Battery</p> <p>Part Desc: 250mm Wall Mounted Battery</p> <p>Part Unit: 1</p> <p>Part Qty: 1</p> <p>Part Price: 1.1</p> <p>Part Cost: 1.1</p>	<p>Part No: 42235</p> <p>Part Name: 250mm Wall Mounted Battery</p> <p>Part Desc: 250mm Wall Mounted Battery</p> <p>Part Unit: 1</p> <p>Part Qty: 1</p> <p>Part Price: 1.1</p> <p>Part Cost: 1.1</p>

