



SENSOR TAP DECK MOUNTED DC

Order Code 42211

Zip AquaSense™ Touch-free tap range incorporates simple and modern design, with the latest electronic functionality delivering maximum hygiene and efficiency with integrated flow control achieving a 6 Star WELS rating for maximum water savings, the tap also features an automatic purge function, sensor range adjustment, wave on/wave off function, Anti-Vandal and Lock Out functions and a Chlorination function.

Manufacturing Code	42211
--------------------	-------



Water Pressure	Min 70kPa - Max 700kPa
-----------------------	------------------------

Water Connection	12.7mm BSP
-------------------------	------------

Power Rating	6V DC Lithium Battery pack
---------------------	----------------------------

Product Approvals	Watermark, CE
--------------------------	---------------

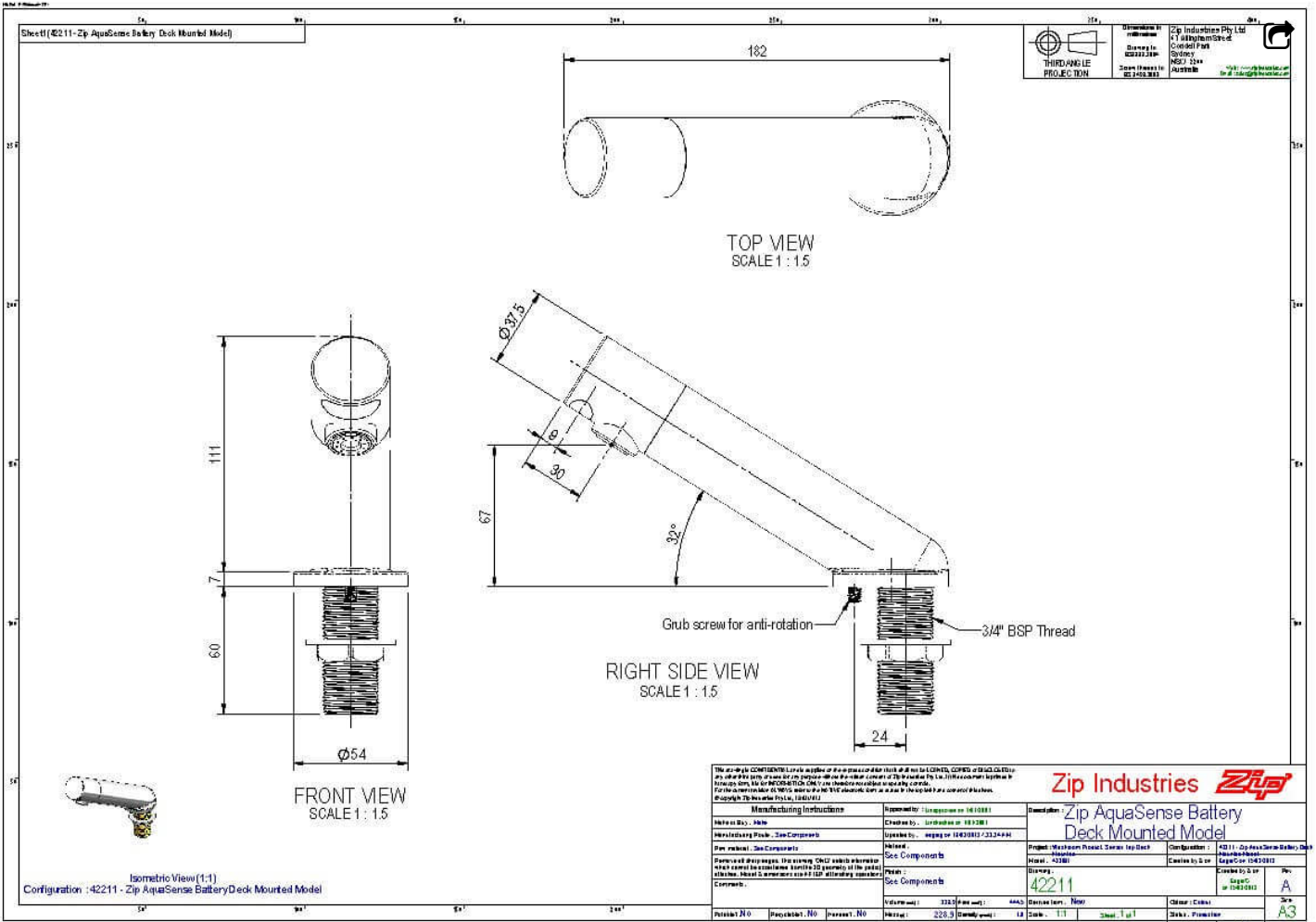
Wels Rating	6 Star
--------------------	--------

Warranty	1 Year
-----------------	--------

Installation Requirements

Must be installed by a suitably qualified person in accordance with manufacturers instructions and with all relevant plumbing and electrical regulations

Installation Detail



THIRD ANGLE PROJECTION

Zip Industries Pty Ltd
171 Alford Street
Croydon Park
NSW 2199
Australia

<p>Manufacturing Instructions</p> <p>Material: 316 Stainless Steel Finish: Polished Tolerances: See Components Assembly: See Components</p>		<p>Zip Industries</p> <p>Zip AquaSense Battery Deck Mounted Model</p>	
<p>Project: Washroom Floor Sensor Tap Deck</p> <p>Part No: 42211</p> <p>Rev: 1.0</p>		<p>Configuration: 42211 - Zip AquaSense Battery Deck Mounted Model</p> <p>Part No: 42211</p> <p>Rev: A</p>	
<p>Material: 316 Stainless Steel</p> <p>Weight: 228.3</p>		<p>Other: 1.0</p> <p>Drawn: [Name]</p> <p>Checked: [Name]</p>	

