



DSX 18, 21, 24, 27KW 60°C

Order Code CL1509

Fully electronically controlled instantaneous water heater, with Automatic flow control, Twin-Temperature-Control TTC® and coloured illuminated multifunctional display for precise hot water supply. Limited to a maximum of 50°C in accordance with AS3498; no tempering valve required.



Manufacturing Code	27941
--------------------	-------

Capacity	n/a
----------	-----

Water Pressure	Min 200kPa - Max 1000kPa
-----------------------	--------------------------

Water Connection	12.7mm BSP
-------------------------	------------

Power Rating	MPS® (Multiple Power Setting) 18, 21, 24 & 27kw 3 ph 400V 50/60 Hz
---------------------	--

Dimensions	W231mm x D97mm x H466mm
-------------------	-------------------------

Product Approvals	WaterMark, CE,
--------------------------	----------------

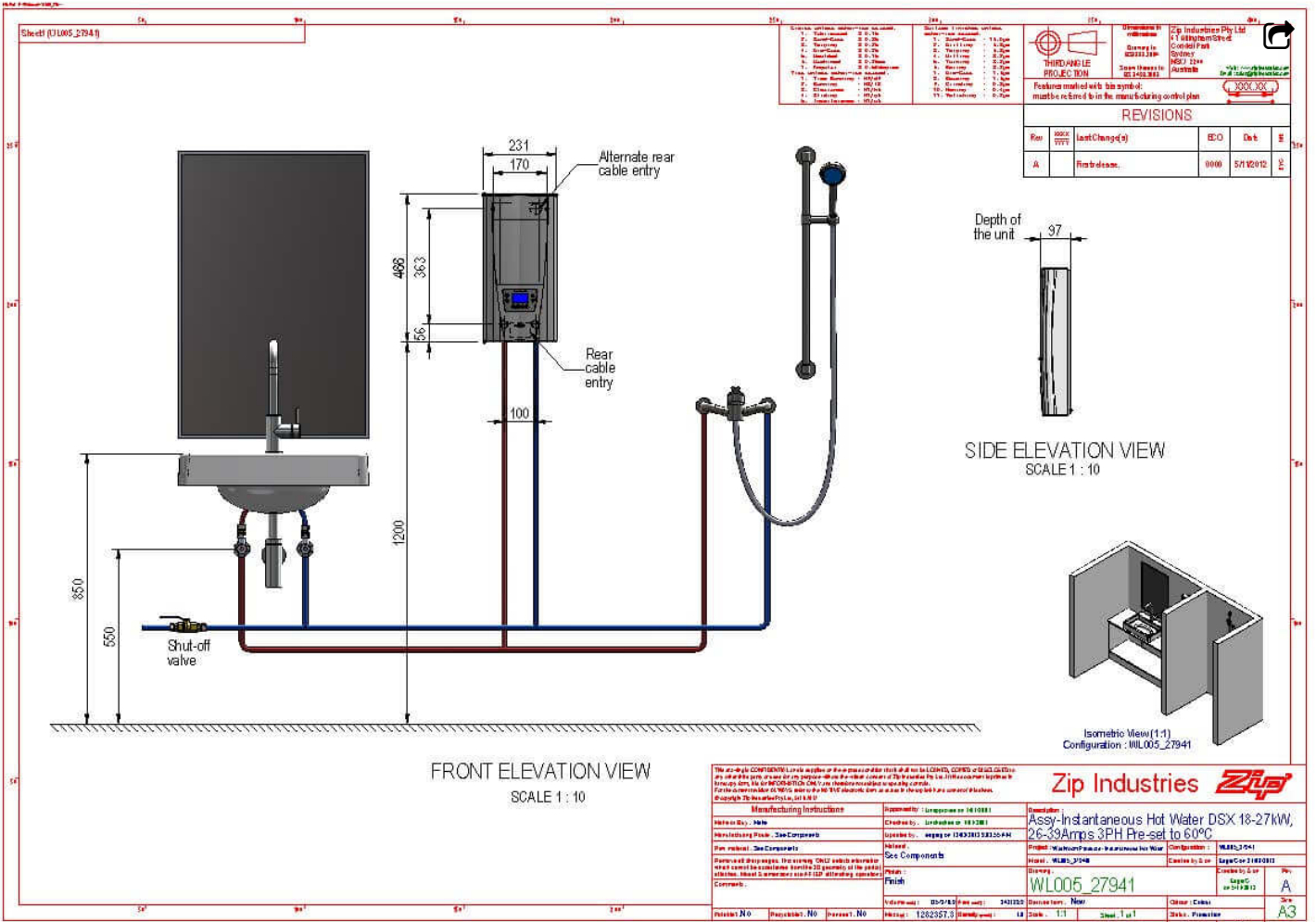
Warranty	Commercial usage 12 months. Residential usage 5 years
-----------------	---

Installation Requirements

"1. Automatic product selection is no substitute for planning by an expert, please consult with your local Zip representative to ensure the product you have chosen is suitable for its intended application. 2. Instantaneous water heaters require dedicated high Amperage Single or Three phase power supplies, please consult with you electrician or electrical design engineer to ensure you have the correct power supply available for the product you have selected . 3. Must be installed by a suitably qualified person in accordance with manufacturers instructions and with all relevant plumbing and electrical regulations.

"

Installation Detail



Rev	Desc	Date	By	App'd
1	Issue for production	05/30/2018	J. Smith	[Signature]

Zip Industries Pty Ltd
 1/1 Allington Street
 Sydney NSW 2148
 Australia
 Phone: +61 (0)2 9510 1000
 Fax: +61 (0)2 9510 1001
 Email: sales@zipwater.com.au

Rev	Desc	Date	By	App'd
A	Production	06/01/2018	J. Smith	[Signature]

Zip Industries *Zip*

Assy-Instantaneous Hot Water DSX 18-27KW, 26-39Amps 3PH Pre-set to 60°C

Project: WLL005_27941
 Drawing: WLL005_27941
 Configuration: WLL005_27941

Revision No	Proposition No	Insert No	Scale	Sheet	Total
			1:1	1 of 1	1

Discussion: [Redacted]

